

State Heritage Register Nomination Form

Important notes for nominators

Before completing this form, read the *Guideline for Nominations to the State Heritage Register** to check whether a nomination is appropriate.

You should only nominate an item you believe to be particularly important in the context of all of NSW, beyond the local area or region.

This is because only items of *state* heritage significance are eligible for listing on the State Heritage Register.

When completing this form note that:

- It must be completed and submitted electronically.*
- Follow the guideline* to fill out the form accurately.
- **YELLOW sections** of this form are mandatory for your nomination to be accepted for consideration.
- **BLUE sections** of this form are recommended, but are not essential, unless otherwise indicated in the form.
- The completed form must show *how* the nominated place is *state* significant to meet the criteria for listing on the register.
- Incomplete nominations, or those with insufficient information, may not be accepted.
- A complete and accurate nomination form, with a clear assessment of state significance of the place or object, will assist in the timely consideration of your nomination.

* Download this form and guideline at: www.heritage.nsw.gov.au/nominating

A. Nominated place

1. Name

Name of place / object:	Gaden House
Other or former name(s):	

2. Location

Street address*:	2A Cooper Street (no.)	(street name)
	Double Bay NSW (suburb / town)	
Alternate street address:	24-26 (no.)	Bay Street (street name)
	Double Bay NSW 2028 (suburb / town)	
Local government area:	Woollahra	
Land parcel(s)*:	11 & 12 (Lot no/s)	(section no.) 4606 (DP no.)
	(Lot no/s)	(section no.) (DP no.)
	(Lot no/s)	(section no.) (DP no.)
Co-ordinates*:	(Latitude)	(Longitude) (Datum)

*At least one of these three location details must be provided. For a movable object, enter its principal location. If the place has no street number, provide land parcels. If it has no land parcels, provide Co-ordinates and a map.

3. Extent of nomination

State Heritage Register Nomination Form

Curtilage map of nominated area:



Source of map or plan:	Google maps + Anne Warr overlay
Boundary description (in words):	The subject site is bounded by Cooper Street, Bay Street and Brooklyn Lane, Double Bay NSW 2028. The site is known as 2A Cooper Street and 24-26 Bay Street Double Bay.

4. Ownership

Name of owner(s):	AMA Holdings Pty Ltd
Contact person:	Michael Xu
Contact position:	General Manager ORO Group Pty Ltd
Postal address:	Office B, level 1, 2 Short Street (street address or postal box)
	Double Bay (suburb or town)
	NSW (state)
	2028 (post code)
Phone number:	(02) 9363 9977
Ownership explanation:	

B. Significance

5. Why is it important in NSW?

Statement of state significance:	<p>It is of State heritage significance because..</p> <p>Gaden House is an exemplar of the development of Australia's cultural life in the post-war era when architects embraced the purity of Architecture as an art form including sculpture as an essential part of the design process. Neville Gruzman's determination to elevate the building above the ordinary, to make a contribution to the urban setting, to ensure that both the external and internal design was functional and aesthetically pleasing, and to specially commission a sculpture that would flow through the building from the entrance foyer up the staircase to finish at the perspex dome, demonstrates a creative endeavour of the highest order and a contribution to Australia's cultural life both at the time and through to the present. The achievement of such a creative endeavour in a suburban commercial building in 1970s Sydney is rare.</p>
----------------------------------	--

State Heritage Register Nomination Form

	<p>Gaden House challenged the status quo of suburban shopping centres and transformed what could have been an ordinary suburban office and retail building into a work of art, pushing the design boundaries to produce a building that was a sculpture, both as an object in the streetscape at night as well as during the day, and in the interiors as a delightful and environmentally comfortable place to work. Neville Gruzman proved that a small suburban office building could also be a work of art. When the building was opened in 1971 by the Premier of NSW, Mr. Robert Askin, its avant-garde design, combining international modernism to suit local conditions, played a pivotal role in elevating Double Bay to its pre-eminent position as Sydney's most cosmopolitan and international shopping centre and has continued to contribute to the community life of Double Bay ever since.</p> <p>Gaden House demonstrates aesthetic characteristics and a high degree of creative and technical achievement by experimenting with materials and new technology, as evidenced by the precast concrete and glass spiral staircase topped by a perspex dome, the specially designed circular ceiling system incorporating lighting and air-conditioning, and the external metal clad louvres which were both environmentally functional and aesthetically significant. Adding to the creative and aesthetic significance of the building was the work of leading Australian sculptor Michael Kitching, which was an integral part of the original design and survived in-situ until around 2006. Despite the loss of the sculpture, which has the potential to be reconstructed through surviving documentation in the Kitching Archive, the building retains much of its original fabric and detailing externally and internally, and these original elements have the potential to yield information about architectural thinking and practice at the time related to a local interpretation of international modernism. The fact that Gaden House has survived in a relatively intact manner since 1971 makes it a structure of some quality and rarity in Double Bay and in Sydney.</p>
Comparisons:	<p>Australia's most recognised architect of the Post-war International style, Harry Seidler, has five works listed as being of state significance on the NSW SHR, only one of which is a commercial building – Torin House, Penrith. Seidler has 14 works listed as being of local heritage significance, six of which are commercial buildings. There are three post-war international style commercial buildings on the State Heritage Register – Torin House, Qantas House and Liner House. There are 14 post-war international style buildings listed as being of local significance, 13 of these since 2012.</p> <p>These statistics highlight the lack of recognition for post-war international style buildings in NSW, particularly commercial buildings. In 2006, the City of Sydney recognised that post-war buildings were under-represented on their LEP and proposed an</p>

State Heritage Register Nomination Form

additional 11 items for inclusion in the 2012 LEP, including the Arnaboldi Building in Clarence Street, Former King George Tower and the Selbourne and Wentworth Chambers in Phillip Street.

While Harry Seidler's work has achieved deserved recognition, the work of locally trained architects such as Neville Gruzman, who operated in the Australian context which involved negotiating 'local sites, construction practices and modest budgets that made innovations hard-won victories' (Gruzman & Goad 2006: 17), have not been so well understood or recognised. As of June 2018, there were no Gruzman works listed as being of state significance, and only six residences and one block of flats (Montrose Apartments Neutral Bay) listed as being of local significance. None of Gruzman's many commercial works have been listed at local or state levels. The reason for this lack of recognition is not necessarily a lack of merit, but more a general lack of focus by heritage practitioners on understanding the architecture of the recent past and the attributes that might make a post-war building of heritage significance.

Liner House at 13-15 Bridge Street Sydney, designed in 1959 by Architects Bunning and Madden, was listed on the SHR in 1985, due to a perceived threat to the building at that time. Gaden House is comparable to Liner House at a State Heritage level in terms of aesthetics, functionality, architectural features, detailing, innovation and contribution to the streetscape and surrounding retail districts. The nomination of Gaden House to the NSW SHR seeks not only due recognition for an architectural work of deserved merit, but also recognition of an architectural style that is under-represented on heritage lists at local and state levels, and therefore at threat from uninformed alterations, additions and potential demolitions.

C. Description

6. Existing place or object

Description:

Gaden House is a three-storey commercial building with lower ground level, designed in 1969 by Sydney architect, Neville Gruzman and opened by Premier Askin in 1971. The building is constructed to its three site boundaries on Bay Street, Cooper Street and Brooklyn Lane. The ground floor level is raised above street level and was designed with seven retail tenancies; - two facing Bay Street and five facing Cooper Street. A lobby extends from the Cooper Street frontage to a spiral stair that extends up from the ground floor and accesses the two upper storeys which are currently used as offices. A separate, external stair accesses the lower ground level which was originally designed for D'Arcy's restaurant and one retail tenancy. Pelicano's restaurant now occupies the entire basement level.

State Heritage Register Nomination Form

	<p>'Its form and appearance were intended to stand out. Designed as a piece of light sculpture hovering above a white terrazzo podium, each façade was modelled by deep louvres on the east (angled vertical), north (horizontal) and west (vertical) elevations. Before it was disastrously painted white, the building was sheathed in bronze stainless steel, and opaque white and transparent Perspex. It could be fully illuminated. The exterior and lobby were originally decorated with a Michael Kitching sculpture that made its way inside and up the circular glass, precast concrete and stainless steel stair which led to the two levels of offices. The upper spaces were distinguished by a special ceiling system devised by Gruzman which both uniformly lit the space and acted as a giant plenum for the airconditioning system. The result was a stunning reflective soffit punctuated by luminous circles, without a single ugly air-register to be seen' (Gruzman & Goad 2006: 152)</p>
Condition of fabric and/or archaeological potential:	<p>The building incorporates a simple concrete structure and retains most of its original external fabric including the terrazzo base, glazed shop walls, external lighting circles heralding shop entrances, stainless steel handrail leading to basement level and metal-clad louvres on each of the facades.</p> <p>The interior retains the original terrazzo flooring, precast concrete and glass open tread spiral stair, original Perspex dome at the top of the stair, most of the original circular ceiling system on the top floor, original full-height aluminium frosted glass entrance doors to offices, some original floor-mounted power-points and most of the original layout.</p> <p>These original elements, internally and externally, have the potential to yield information about architectural thinking at the time.</p> <p>To quote long-term occupant and architect Bruce Stafford: 'It is great to work in a largely intact work of one of Sydney's most respected modernist architects'.</p> <p>The archaeological potential of the site is considered to be low with any early resources likely to have been highly disturbed by the demolition of the former garage building on the site and the excavation and construction of the existing building.</p>
Integrity / intactness:	<p>The building retains most of its original fabric and detailing externally and internally, and these original elements have the potential to yield information about architectural thinking and practice at the time.</p> <p>The following significant elements of the original design remain intact:</p> <p>Externally</p> <p>The simple concrete structure</p>

State Heritage Register Nomination Form

	<p>Most of the original external fabric including the terrazzo base, glazed shop walls, external lighting circles heralding shop entrances, stainless steel handrail leading to basement level and metal-clad louvres on each of the facades.</p> <p>Internally The interior retains the original terrazzo flooring, precast concrete and glass open tread spiral stair, original perspex dome at the top of the stair, most of the original circular ceiling system on the top floor, original full-height aluminium frosted glass entrance doors to offices, some original floor-mounted power-points and most of the original layout.</p>
Modifications Dates:	<p>Council records and the land title documents indicate that the building continued to be leased by various retail and commercial tenants and that applications were submitted for change of uses and modifications particularly for the restaurant use and also for change of business hours for the other retail premises from the 1970s to the present.</p> <p>Ownership: 1969-1981 Randolph Pty Ltd 1981-1988 The Broken Hill Mine Employees Pension Fund Custodian Limited. 1988 – 2017 Rose Marie Hancock 2017 - AMA Holdings Pty Ltd,</p> <p>Modifications: C2000 The original bronze-finished stainless steel external louvres painted white C2006 The Michael Kitching sculpture removed. Location unknown. C2000 The original circular ceiling system removed on first floor.</p>
Date you inspected the place for this description:	March 2018
Current use*:	Commercial
Original or former use(s)*:	Commercial
Further comments:	

Illustrations can be inserted as images in section J.

* These details must be entered if you are basing the significance of the place or object on its past or present use.

D. Historical outline

7. Origins and historical evolution

State Heritage Register Nomination Form

Years of construction*:	1970 (start year)	1971 (finish year)
Designer / architect*:	Neville Gruzman	
Maker/ builder:	TC Whittle	
Historical outline of place or object:	<p>Gaden House was originally part of just over five acres of land granted to Daniel Cooper in April 1833, and later conveyed to Frances Leonora Mackay in October 1904 . The land was subdivided as the 'Brooklyn Estate' in 1905 and in 1906, the subject site, Lots 11 and 12 was transferred to Mary Anne Allerton, a widow from Sydney. In 1916 the site was transferred to Samuel Galbraith, Motor Proprietor, and his wife Nellie Josephine Galbraith who developed the land as service station and garage proprietors . From this period onwards, Bay Street began to change from a predominantly residential area to an area of mixed residential, retail and commercial developments, gradually transforming into a thriving retail and commercial area.</p> <p>The subject site continued to operate as a motor garage, through several ownerships, until the site was purchased in 1968 by Randolph Pty Ltd, of whom Gordon Stewart, a partner in the legal firm of Gaden, Bowen and Stewart, was a Director. The construction of the Gaden building on the site in 1971 was a creative leap, transforming what had been a pragmatic suburban subdivision with a motor garage on the corner through the first half of the 20th century, into a sculptural object at the junction of three streets in the increasingly sophisticated and cosmopolitan post-war shopping centre of Double Bay.</p> <p>The subject building was developed as a suburban branch office for the established firm of solicitors, Gaden, Bowen and Stewart – hence the building was known as ‘Gaden House’.</p> <p>Gruzman’s Architectural office, then operating from 8 Oswald Street Darling Point, spent over three months working on the design before submitting the revised Development Application to Woollahra Council on the 18th March 1969.</p> <p>The builders for the project were TC Whittle, and the building was officially opened by the Premier of NSW, Mr Askin, on Thursday November 25 1971, with a guest list of four hundred.</p> <p>The building continued to be leased by various retail and commercial tenants since its opening in 1971. Randolph Pty Ltd retained ownership of the building until 1981 when it was transferred to the Broken Hill Mine Employees’ Pension Fund Custodian Limited. The building was transferred to Rose Marie Hancock in December 1988, and from that time until the recent sale of the building, little maintenance has been undertaken on the building. The current owners, AMA Holdings Pty Ltd, are proposing to undertake changes to the building for ongoing retail, residential and commercial use.</p>	

State Heritage Register Nomination Form

* These details must be entered (as shown in the guideline) if you are basing the significance of the place or object on its architectural or technical qualities or its historical period of construction.

Historical maps, photographs or other illustrations that help to explain the history of the place can be inserted in section J.

8. Historical themes represented

National theme(s): <i>Select one or more of 1-9.</i> <i>New line for each selected.</i>	3. Developing local, regional, national economies 4. Building settlements, towns and cities 8. Developing Australia's cultural life 9. Marking the phases of life
State theme(s): <i>Select one or more for each above selected National theme 1-9.</i> <i>New line for each selected.</i>	Within National themes 1-3: 3. Commerce Within National themes 4-9: 4. Towns, suburbs and villages 4. Accommodation 8. Creative endeavour 9. Persons

E. Criteria

9. Assessment under Heritage Council criteria of state significance

A. It is important in the course or pattern of the cultural or natural history of NSW.	<p>It meets this criterion of State significance because...</p> <p>Gaden House is an exemplar of the development of Australia's cultural life in the post-war era when architects embraced the purity of architecture as an art form including sculpture as an essential part of the design process.</p> <p>The building demonstrates how an ordinary suburban office building could become a sculptural work in the streetscape, enhancing its corner location at the junction between a residential area and commercial area. The interiors also became sculptural spaces through the quality of finishes such as spiral stair and circular ceiling panels, as well as through the specially commissioned sculpture by Michael Kitching.</p> <p>The building demonstrates how the principles of International Modernism could be realised at the level of a modestly scaled suburban commercial / retail building. It could be argued that Gaden House lifted the quality of the built environment in Double Bay shopping centre at a time when the area was growing in sophistication and cosmopolitanism as a result of post-war immigration. No other examples of commercial buildings in the Woollahra municipality demonstrate this level of design sophistication.</p>
---	--

State Heritage Register Nomination Form

	Gaden House reflects the contemporary form and materials of modern architecture of the period.
B. It has a strong or special association with the life or works of a person, or group of persons of importance in the cultural or natural history of NSW.	<p>It meets this criterion of State significance because...</p> <p>The current building on the site is associated with Sydney architect and former Councillor and Mayor of Woollahra, Neville Gruzman OAM, who designed the building to accommodate a prominent legal firm and well-known restaurant. The building embodied the close cooperative relationship between architect and sculptor which was an architectural aspiration of the time.</p> <p>The building was opened in 1971 by the Premier of NSW, Robert Askin, and because of its avant-garde design combining International Modernism to suit local conditions, it played a pivotal role in elevating Double Bay to its pre-eminent position as Sydney's most cosmopolitan and international shopping centre. It became a sought-after location for fashionable design businesses such as Carla Zampatti who leased two shops in the building from 1979 to 1991.</p>
C. It is important in demonstrating aesthetic characteristics and/or a high degree of creative or technical achievement in NSW.	<p>It meets this criterion of State significance because...</p> <p>The Architect's determination to elevate the building above the ordinary, to make a contribution to the urban setting, to ensure that the external design was both functional and aesthetically pleasing, and to specially commission a sculpture that would flow through the building from the entrance foyer up the staircase to finish at the perspex dome, demonstrates a creative endeavour of the highest order and a contribution to Australia's cultural life both at the time and through to the present. Although the Kitching sculpture is no longer extant, surviving archival documentation would enable an accurate reconstruction to take place.</p> <p>Gaden House demonstrates aesthetic characteristics and a high degree of creative and technical achievement in the following areas:</p> <ul style="list-style-type: none"> • The whole building, as assessed by leading architectural historian, Dr Philip Goad, is a 'startling piece of large-scale environmental sculpture, modelled and lit at night as a giant public ornament' (Gruzman & Goad 2006: 28). • The building incorporated the sculpture of a leading Australian sculptor, Michael Kitching, which although no longer extant, has the potential to be accurately reconstructed. • The building experimented with materials and technology, as evidenced by the precast concrete and glass spiral staircase, the circular ceiling system incorporating lighting and air-conditioning, and the external metal clad louvres which were both functional and aesthetically pleasing.

State Heritage Register Nomination Form

<p>D. It has strong or special association with a particular community or cultural group in NSW for social, cultural or spiritual reasons.</p>	<p>It meets this criterion of State significance because...</p> <p>The building has contributed to the community life of Double Bay since its completion in 1971. It has accommodated prominent professional firms on the upper floors and prominent retail businesses and restaurants on the lower floors. Its covered podium areas facing Cooper and Bay Streets generously made private space available for public enjoyment.</p> <p>Together with the Royal Oak Hotel opposite, Gaden House has formed an urban gateway leading from the predominantly residential area of Cooper Street to the west to the cosmopolitan Double Bay shopping centre to the east.</p> <p>The construction of Gaden House on the site in 1971 was a creative leap, transforming what had been a pragmatic suburban subdivision with a motor garage on the corner through the first half of the 20th century, into a sculptural object at the junction of three streets in the increasingly sophisticated and cosmopolitan post-war shopping centre of Double Bay.</p>
<p>E. It has potential to yield information that will contribute to an understanding of the cultural or natural history of NSW.</p>	<p>It meets this criterion of State significance because...</p> <p>The archaeological potential of the site is considered to be low with any early resources likely to have been highly disturbed by the demolition of the former garage building on the site and the excavation and construction of the existing building.</p> <p>The building incorporates a simple concrete structure and retains most of its original external fabric including the terrazzo base, glazed shop walls, external lighting circles heralding shop entrances, stainless steel handrail leading to basement level and metal-clad louvres on each of the facades.</p> <p>The interior retains the original terrazzo flooring, precast concrete and glass open tread spiral stair, original perspex dome at the top of the stair, most of the original circular ceiling system on the top floor, original full-height aluminium frosted glass entrance doors to offices, some original floor-mounted power-points and most of the original layout.</p> <p>These original elements, internally and externally, have the potential to yield information about architectural thinking at the time by demonstrating a local architectural interpretation of international modernism in both the pared-down external elevations and the attention to internal details such as stair, doors, floors and ceiling patterns.</p> <p>To quote long-term occupant and architect Bruce Stafford: 'It is great to work in a largely intact work of one of Sydney's most respected modernist architects'.</p>

State Heritage Register Nomination Form

F. It possesses uncommon, rare or endangered aspects of the cultural or natural history of NSW.	<p>It meets this criterion of State significance because...</p> <p>When completed in 1971, Gaden House set a standard for Double Bay in terms of quality of aesthetics, functionality and contribution to the surrounding streetscape, which has hardly been matched since. Although Gruzman designed a further two commercial buildings in Bay Street in the 1970s, neither of these structures measures up to the quality of design of Gaden House, although the three buildings as a group contribute to the growing sophistication of Double Bay shopping centre.</p> <p>The fact that Gaden House has survived in a relatively intact manner, both internally and externally, since 1971 makes it a structure of some quality and rarity in Double Bay and in Sydney.</p> <p>Architectural historian, Philip Goad, describes Gruzman's non-residential insertions into Sydney's urban fabric in the 1960s, such as Gaden House, as 'crafted graftings of startling modernity...that by their very difference seemed to resonate with significance' (Gruzman & Goad 2006: 28).</p>
G. It is important in demonstrating the principal characteristics of a class of cultural or natural places/environments in NSW.	<p>It meets this criterion of State significance because...</p> <p>Gaden House is:</p> <ul style="list-style-type: none"> • A fine example of International Modernism expressed in suburban Sydney. • A fine and representative example of the work of Neville Gruzman, architect. • A fine example of the integration of aesthetics and functionality, thereby expressing the characteristics of International Modernism. • A fine example of the modernist design aesthetic which paid attention to all aspects of the design of the building from the external form to the smallest details of the interior, seamlessly integrating form, function and beauty. • A fine example of environmentally appropriate architecture, designing for climate, orientation and location. • A fine example of a building that integrates sculpture and architecture. • A representative embodiment of the cosmopolitan nature of Double Bay in the early 1970s.

F. Listings

10. Existing heritage listings

Check one box for each of the following listings:

Listed	Not listed	
<input type="checkbox"/>	<input checked="" type="checkbox"/>	Local environmental plan (LEP) - heritage item (call the local council to confirm)

State Heritage Register Nomination Form

<input type="checkbox"/>	<input checked="" type="checkbox"/>	Regional environmental plan (REP) - heritage item (call the local council to confirm)
<input type="checkbox"/>	<input checked="" type="checkbox"/>	LEP - Conservation area (call the local council to confirm)
<input type="checkbox"/>	<input checked="" type="checkbox"/>	Draft LEP - Draft heritage item (call the local council to confirm)
<input type="checkbox"/>	<input checked="" type="checkbox"/>	Draft LEP - Draft conservation area (call the local council to confirm)
<input type="checkbox"/>	<input checked="" type="checkbox"/>	State Heritage Register (search the register at www.heritage.nsw.gov.au)
<input type="checkbox"/>	<input checked="" type="checkbox"/>	National Trust register (call the National Trust to confirm)
<input type="checkbox"/>	<input checked="" type="checkbox"/>	Aboriginal heritage information management system (by Dept. of Environment & Conservation)
<input checked="" type="checkbox"/>	<input type="checkbox"/>	Royal Australian Institute of Architects Register of 20th Century Architecture (call the RAI A)
<input type="checkbox"/>	<input checked="" type="checkbox"/>	National shipwreck database (search maritime.heritage.nsw.gov.au/public/welcome.cfm)
<input type="checkbox"/>	<input checked="" type="checkbox"/>	Engineers Australia list (call Engineers Australia to confirm)
<input type="checkbox"/>	<input checked="" type="checkbox"/>	National Heritage List (search Australian Heritage Database www.deh.gov.au/cgi-bin/ahdb/search.pl)
<input type="checkbox"/>	<input checked="" type="checkbox"/>	Commonwealth Heritage List (search above Australian Heritage Database)
<input type="checkbox"/>	<input checked="" type="checkbox"/>	Register of the National Estate (search above Australian Heritage Database)
<input type="checkbox"/>	<input checked="" type="checkbox"/>	NSW agency heritage and conservation section 170 register (call owner or occupier Agency)
Other listings:		

G. Photograph

11. Image 1

Principal photograph
of place or object:



Subject of photo:	Gaden House viewed
Date of photo:	March 2018
Photographer:	Anne Warr
Copyright holder:	Anne Warr

Include additional photographs and images in section J.

If possible, please also provide a high resolution, publication-quality copy of this image saved to disk (or as non-digital prints) with the signed hard-copy of the nomination form.

H. Author

12. Primary author of this form

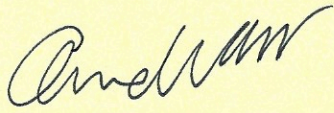
State Heritage Register Nomination Form

Your name:	Ms	Anne (first)	Warr (family)
Organisation:	Anne Warr Heritage Consulting		
Position:	Director		
Daytime phone number:	0418619639		
Fax number:	-		
Postal address:	42 Kent Street (street address or postal box)		
	Millers Point (suburb or town)		
	NSW (state)	2000 (post code)	
Email address:	warr.anne@gmail.com		
Date form completed:	23 August 2018		

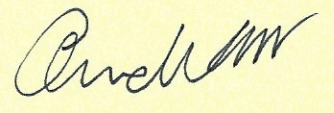
13. References used for completing this form

	Author	Title	Publisher	Repository / location	Year published
1.	Gruzman, N & Goad, P	Gruzman, An Architect and His City	Craftsman House	Victoria	2006
2.	Woollahra Municipal Council	Archives		Double Bay	
3.					
4.					
5.					
6.					
7.					
8.					
9.					
10.					
11.					
12.					

14. Signed by author

	04 SEPT 2018
Author (sign and print name)	Dated

15. Signed by copyright holder(s) of image(s)

	04 SEPT 2018
Image copyright holder (sign and print name)	Dated

State Heritage Register Nomination Form

Image copyright holder (sign and print name)

Dated

Image copyright holder (sign and print name)

Dated

Signing 14 and 15 confirms the author of this form and copyright holder(s) of images give permission for the Heritage Branch to use non-confidential information and images entered in this form for any purpose related to processing the nomination. Possible uses include (but are not limited to) publication on the Heritage Branch website, newsletter, reports or other publications. The author of the form, image copyright holder(s) and photographer(s) will be acknowledged when published.

I. Nominator

16. Nominator to be contacted by Heritage Branch

Name:	Ms	Catherine (first)	Colville (family)
Organisation:	Woollahra Municipal Council		
Position in organisation:	Strategic Heritage Officer - Strategic Planning		
Daytime phone number:	(02) 9391 7062		
Fax number:	(02) 9391 7044		
Postal address:	536 New South Head Road (street address or postal box)		
	Double Bay (suburb or town)		
	NSW (state)	2028 (post code)	
Email address:	catherine.colville@woollahra.nsw.gov.au		

Alternate contact name:	Mr	Chris (first)	Bluett (family)
Position in organisation:	Manager Strategic Planning		
Daytime phone number:	(02) 9391 7083		
Fax number:	(02) 9391 7044		
Postal address:	536 New South Head Road Double Bay NSW 2028		
Email address:	chris.bluett@woollahra.nsw.gov.au		

17. Reasons for nomination

Background or reasons for nomination:	An assessment of significance has been undertaken on the property in accordance with the OEH guidelines 'Assessing Heritage Significance' (NSW Heritage Office 2001) and the property has been assessed as meeting the criteria for listing at State level.
--	---

18. Form signed by nominator for submitting

State Heritage Register Nomination Form

Nominator (sign and print name)

Dated

CHECKLIST



[Spell check your form - double click here \(or F7\)](#)

Before submitting this form, check that you have:

- ☐ completed all yellow sections, and other sections marked as essential.
- ☐ completed blue sections wherever possible.
- ☐ explained why the place or object is *state* significant in the statement of state significance.
- ☐ explained *how* one or more of the criterion has been fulfilled for listing.
- ☐ inserted photographs, maps and other illustrations as digital or scanned images.
- ☐ acknowledged all sources and references you used.
- ☐ signed and dated this form.
- ☐ obtained the nominator's and image copyright holders' signatures.
- ☐ if possible, attached a disk (or non-digital prints) for posting select image/s of high resolution, suitable for publication.

TO SUBMIT THIS NOMINATION:

Post all of the following:

1. a signed hard-copy of the form;
2. an electronic copy of the completed form saved to disk (unless you prefer to email it separately); and
3. other attachments, such as high-resolution copies of photographs suitable for publication.

Addressed to:

The Director
Heritage Branch
NSW Department of Planning
Locked Bag 5020
Parramatta NSW 2124

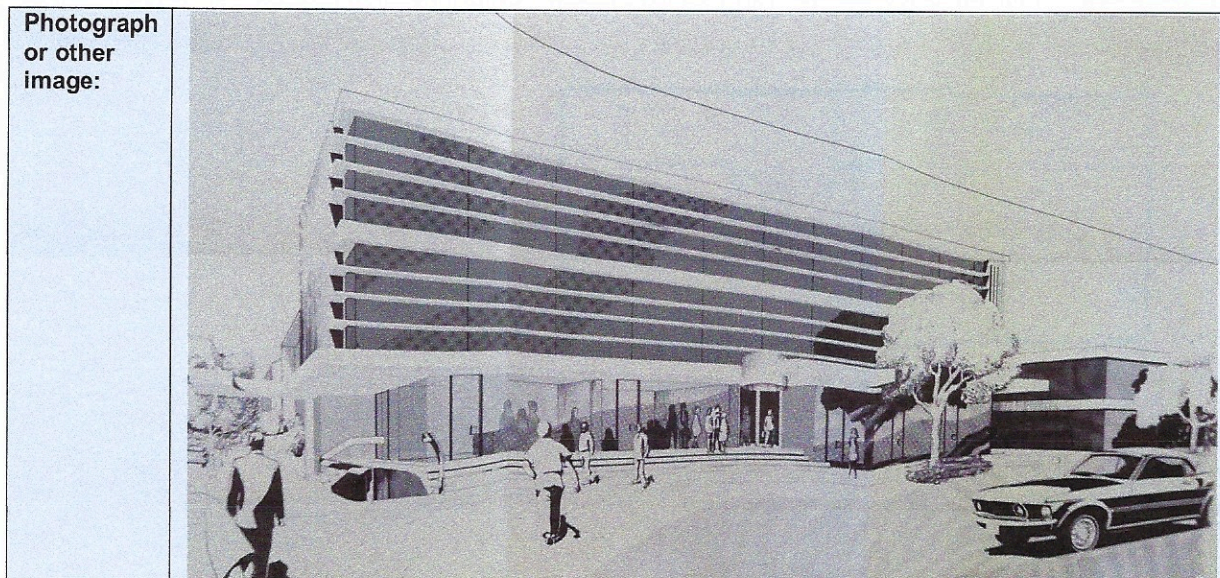
If an electronic copy of the form is not posted, email it instead to:

nominations@planning.nsw.gov.au

State Heritage Register Nomination Form

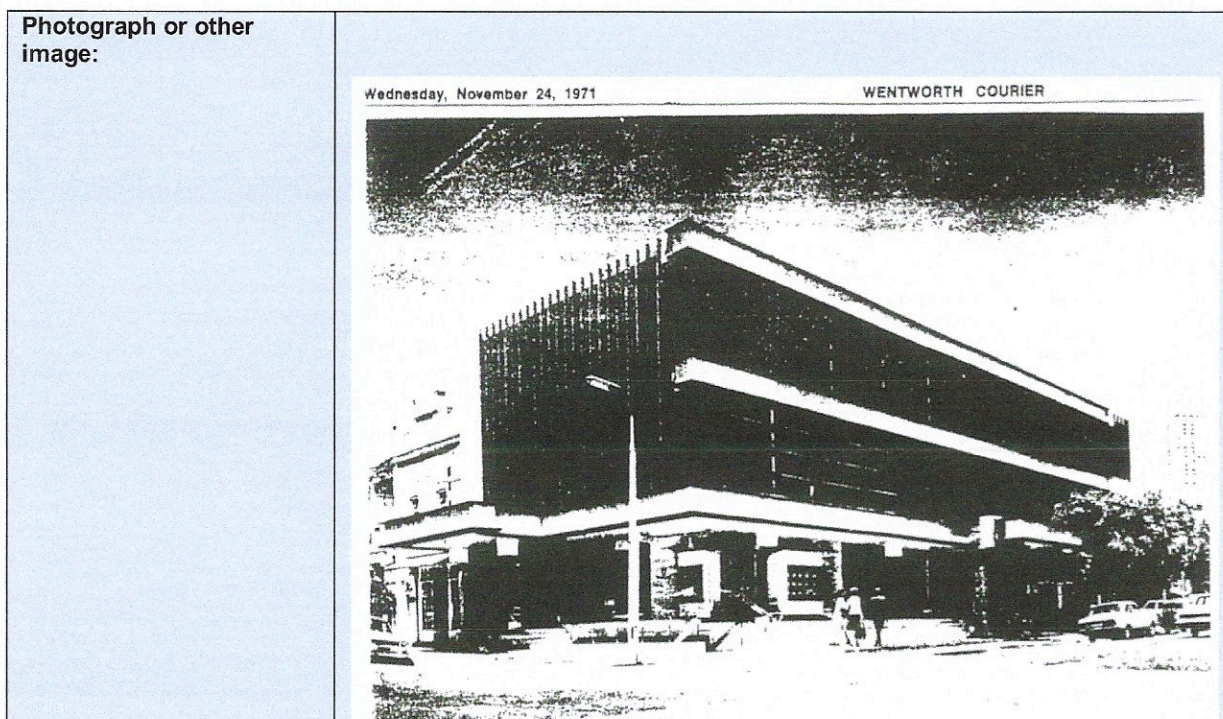
J. Additional photographs, maps or other images

Image 2



Subject of image:	Woollahra Council DA 58/69, Perspective by Neville Gruzman Architect showing northern façade of proposed Gaden House, Double Bay.
Date of image:	18 March 1969
Photographer or author:	Neville Gruzman Architect
Copyright holder:	Woollahra Municipal Architect

Image 3

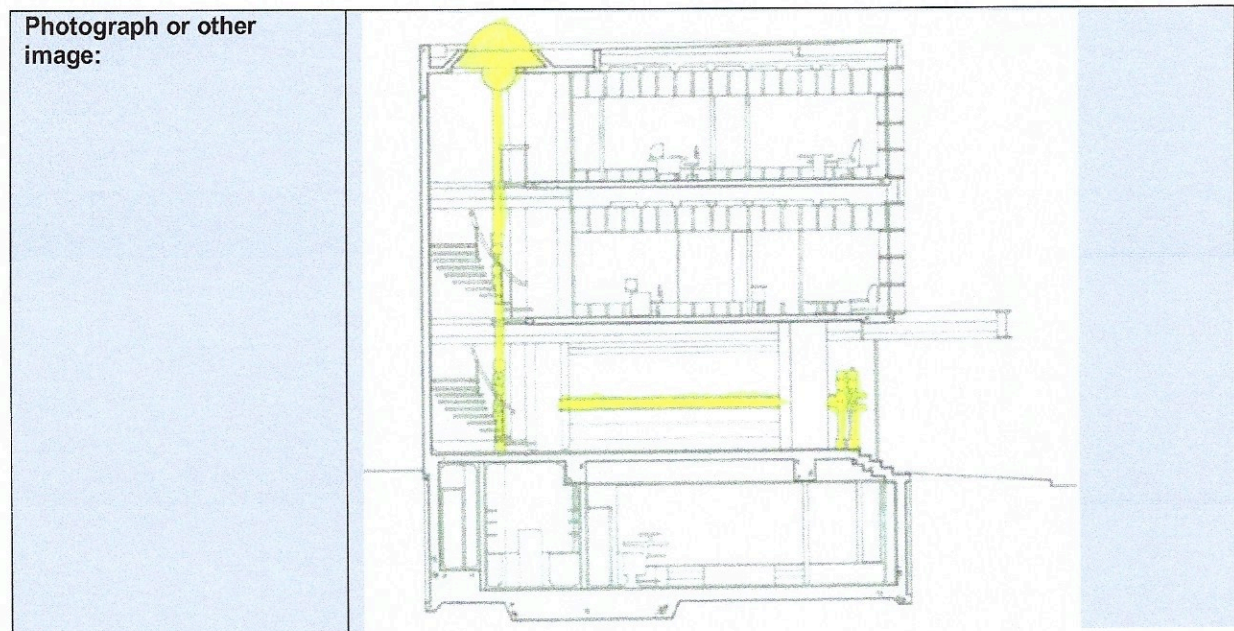


State Heritage Register Nomination Form

Subject of image:	Gaden House - A Trend Setter
Date of image:	24 November 1971
Photographer or author:	Wentworth Courier
Copyright holder:	Wentworth Courier

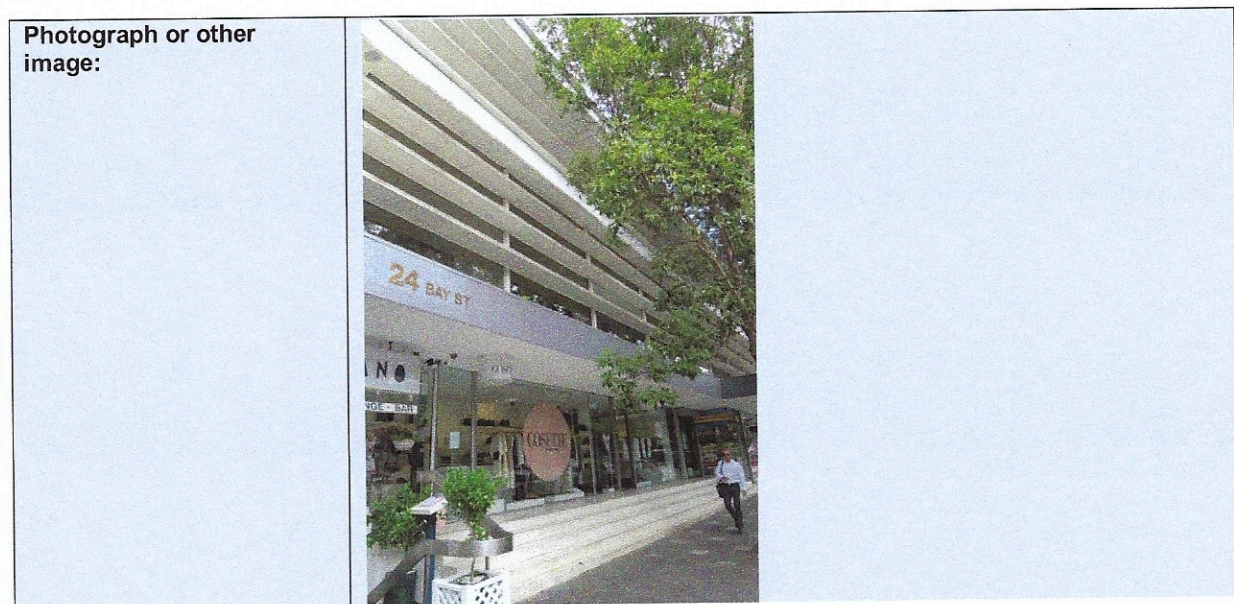
State Heritage Register Nomination Form

Image 4



Subject of image:	Architectural Section through Gaden House, with Michael Kitching sculpture highlighted in yellow.
Date of image:	2006
Photographer or author:	Ted Quinton
Copyright holder:	Craftsman House, Victoria

Image 5



Subject of image:	Northern podium of Gaden House
Date of image:	March 2018
Photographer or author:	Anne Warr
Copyright holder:	Anne Warr

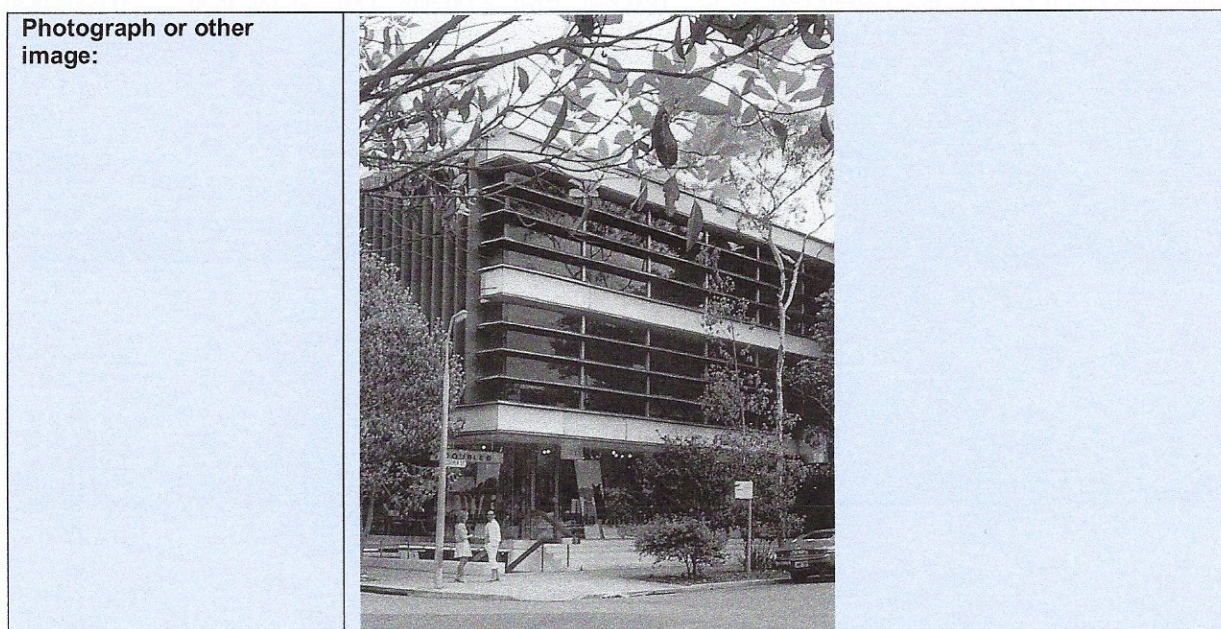
State Heritage Register Nomination Form

Image 6



Subject of image:	Bay Street elevation, Gaden House
Date of image:	March 2018
Photographer or author:	Anne Warr
Copyright holder:	Anne Warr

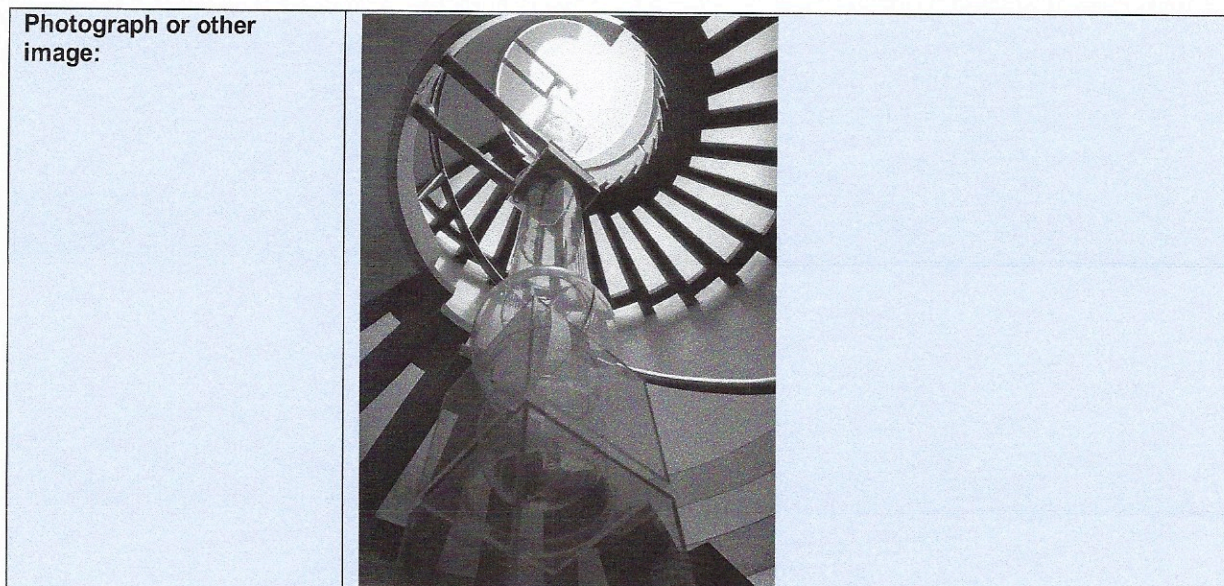
Image 7



Subject of image:	Gaden House - North East Elevation
Date of image:	1971
Photographer or author:	David Moore
Copyright holder:	

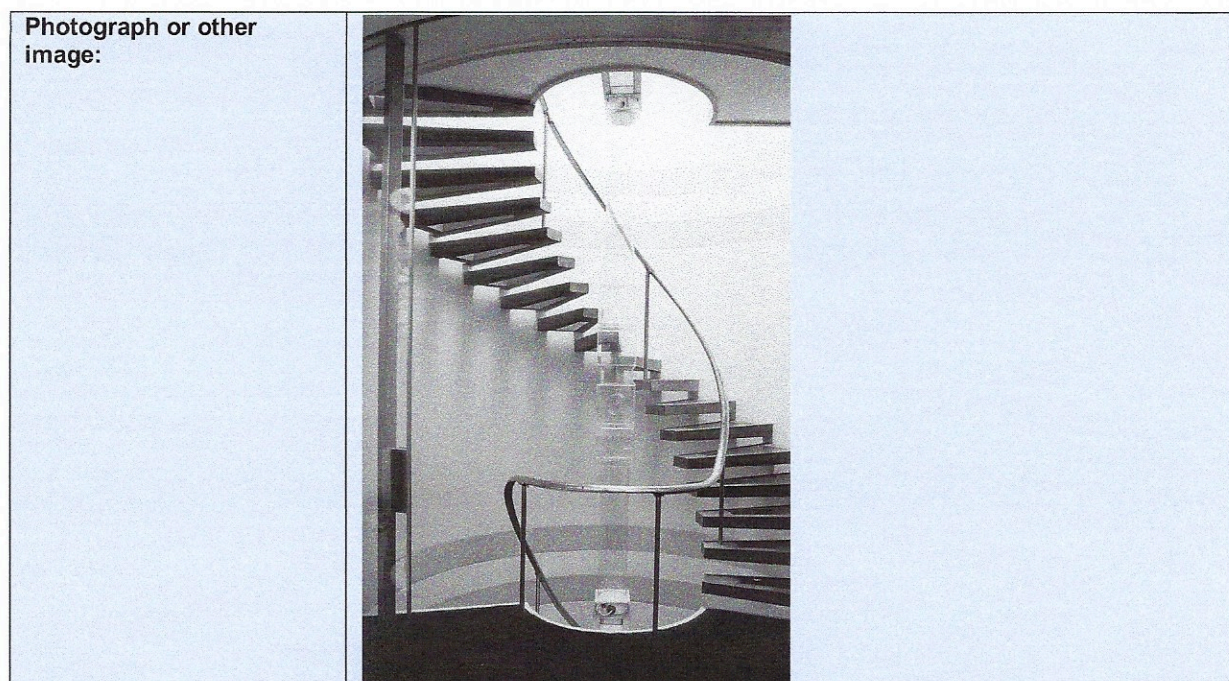
State Heritage Register Nomination Form

Image 8



Subject of image:	Spiral stair and Kitching Sculpture
Date of image:	1971
Photographer or author:	David Moore
Copyright holder:	David Moore

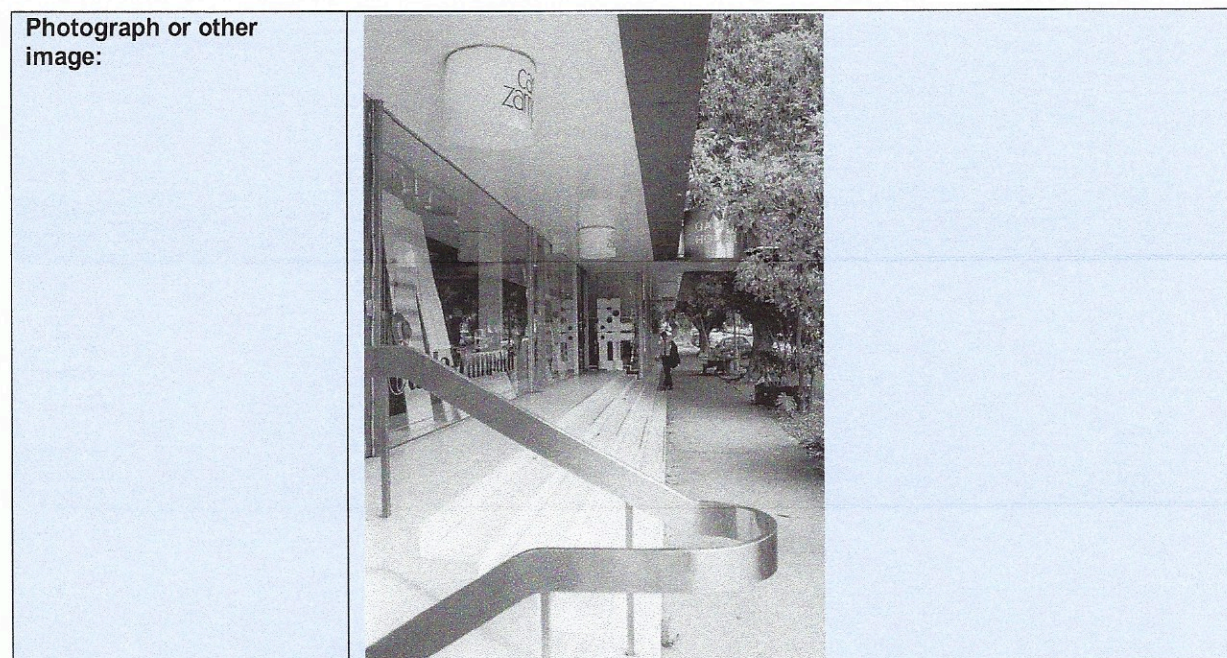
Image 9



Subject of image:	Spiral stair and Kitching sculpture
Date of image:	1971
Photographer or author:	David Moore
Copyright holder:	David Moore

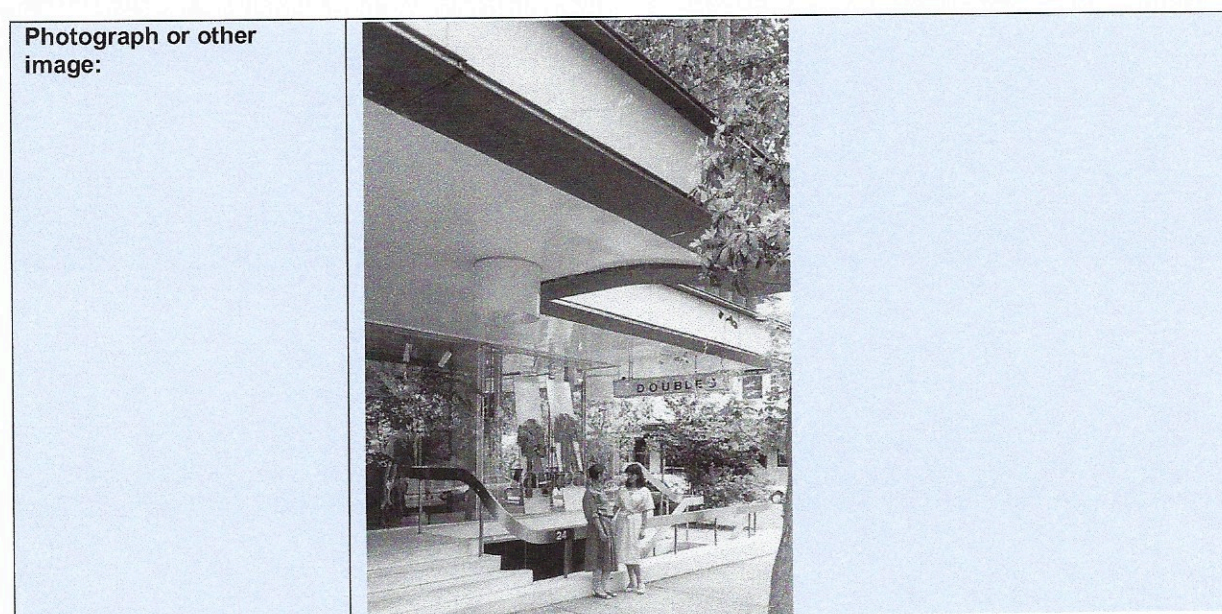
State Heritage Register Nomination Form

Image 10



Subject of image:	Northern podium and Carla Zampatti shop
Date of image:	1971
Photographer or author:	David Moore
Copyright holder:	David Moore

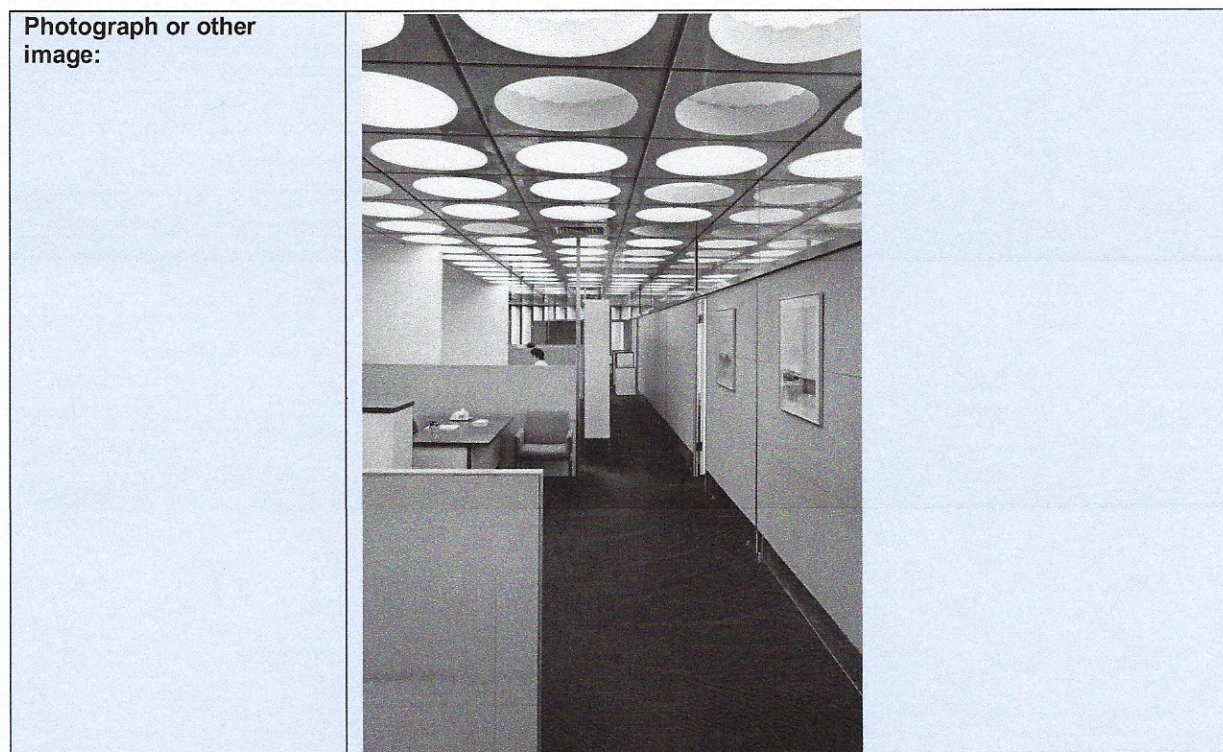
Image 11



Subject of image:	Bay Street elevation
Date of image:	1971
Photographer or author:	David Moore
Copyright holder:	David Moore

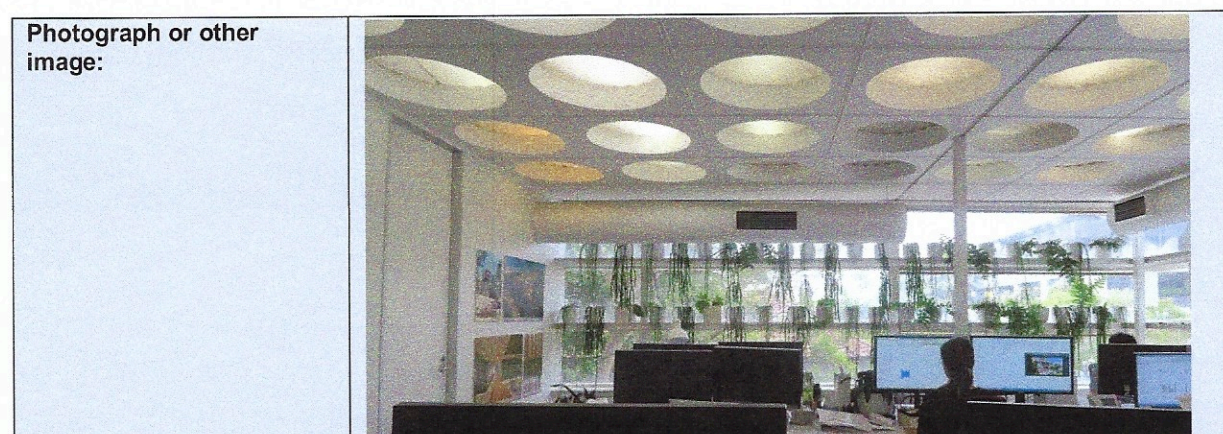
State Heritage Register Nomination Form

Image 12



Subject of image:	Upper floor specially designed ceiling system for uniform lighting and Air con.
Date of image:	1971
Photographer or author:	David Moore
Copyright holder:	David Moore

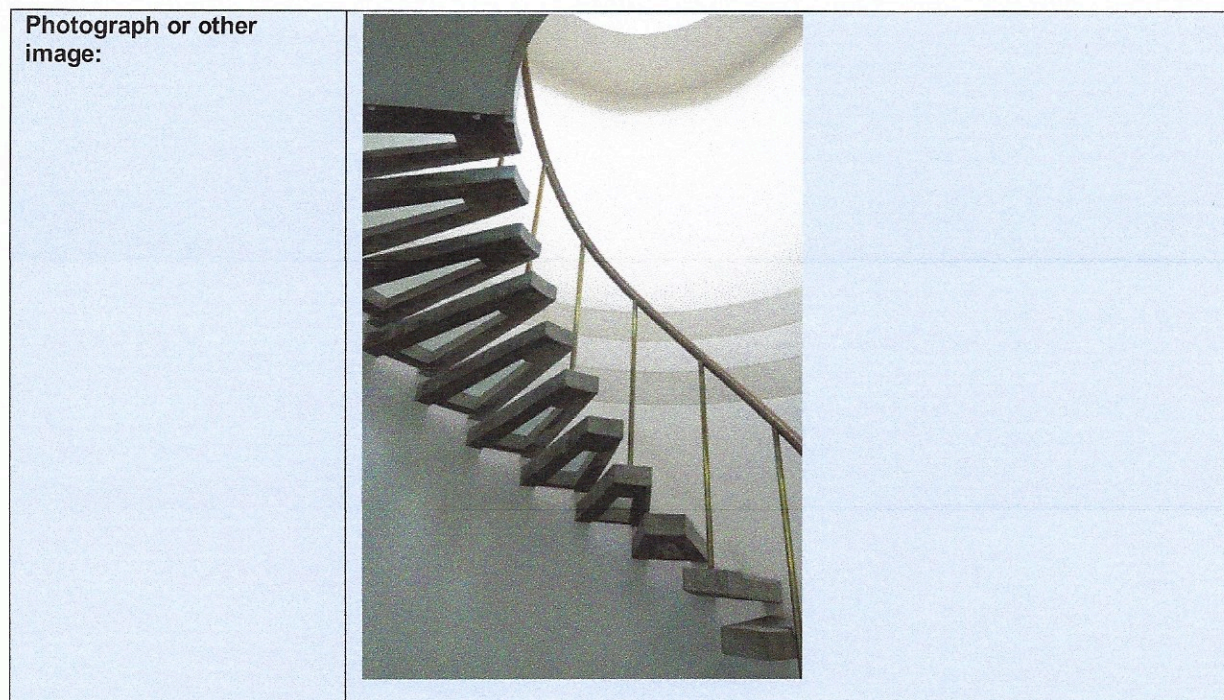
Image 13



Subject of image:	Upper level ceiling system
Date of image:	March 2018
Photographer or author:	Anne Warr
Copyright holder:	Anne Warr

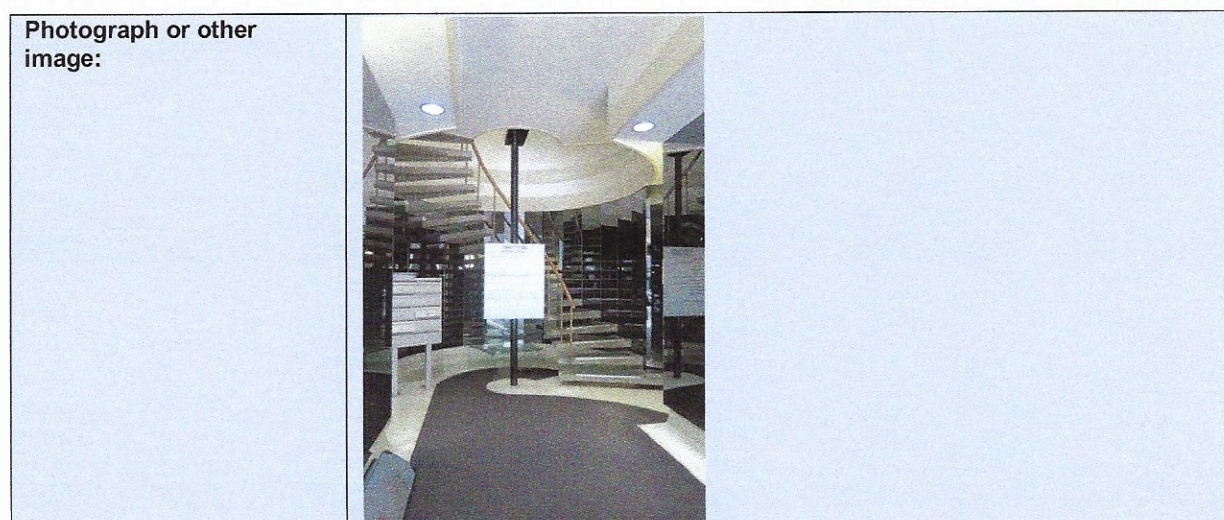
State Heritage Register Nomination Form

Image 14



Subject of image:	Spiral staircase
Date of image:	March 2018
Photographer or author:	Anne Warr
Copyright holder:	Anne Warr

Image 15



Subject of image:	Spiral Staircase at lobby entrance
Date of image:	March 2018
Photographer or author:	Anne Warr
Copyright holder:	Anne Warr